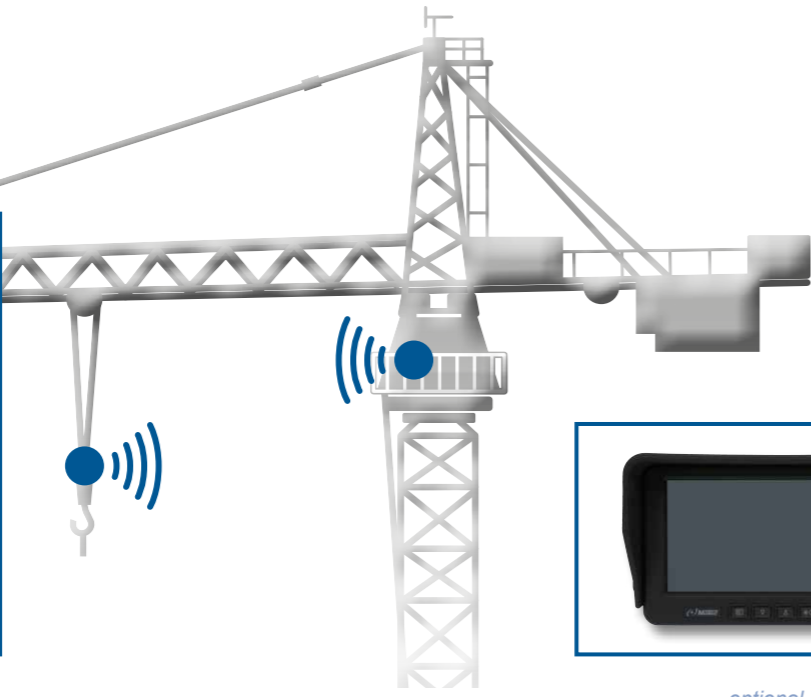
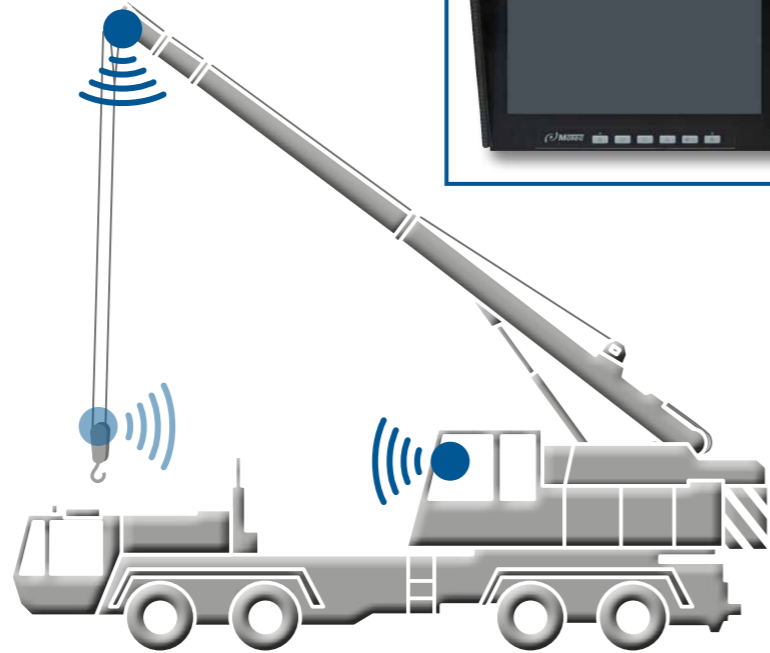




optional



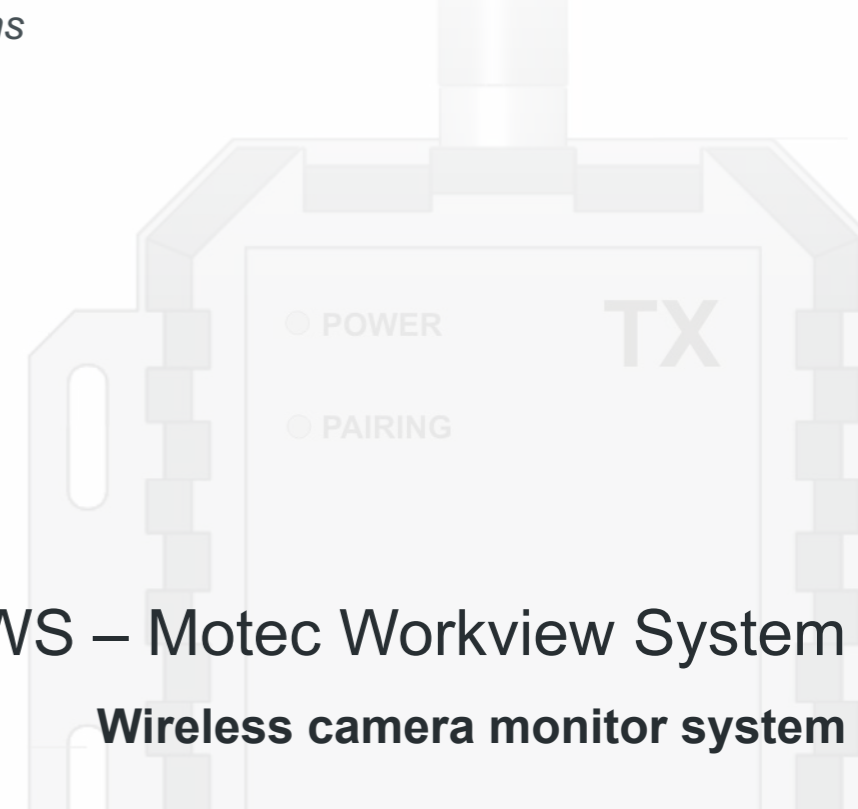
optional



Motec GmbH
Oberweyerer Straße 21
65589 Hadamar-Steinbach
GERMANY

Phone +49 6433-9145 0
motec.info@ametek.com
www.motec-cameras.com

Copyright © Motec GmbH 2019 | 100 0070 117 | 01/2020



MWS – Motec Workview System
Wireless camera monitor system

Motec Workview System

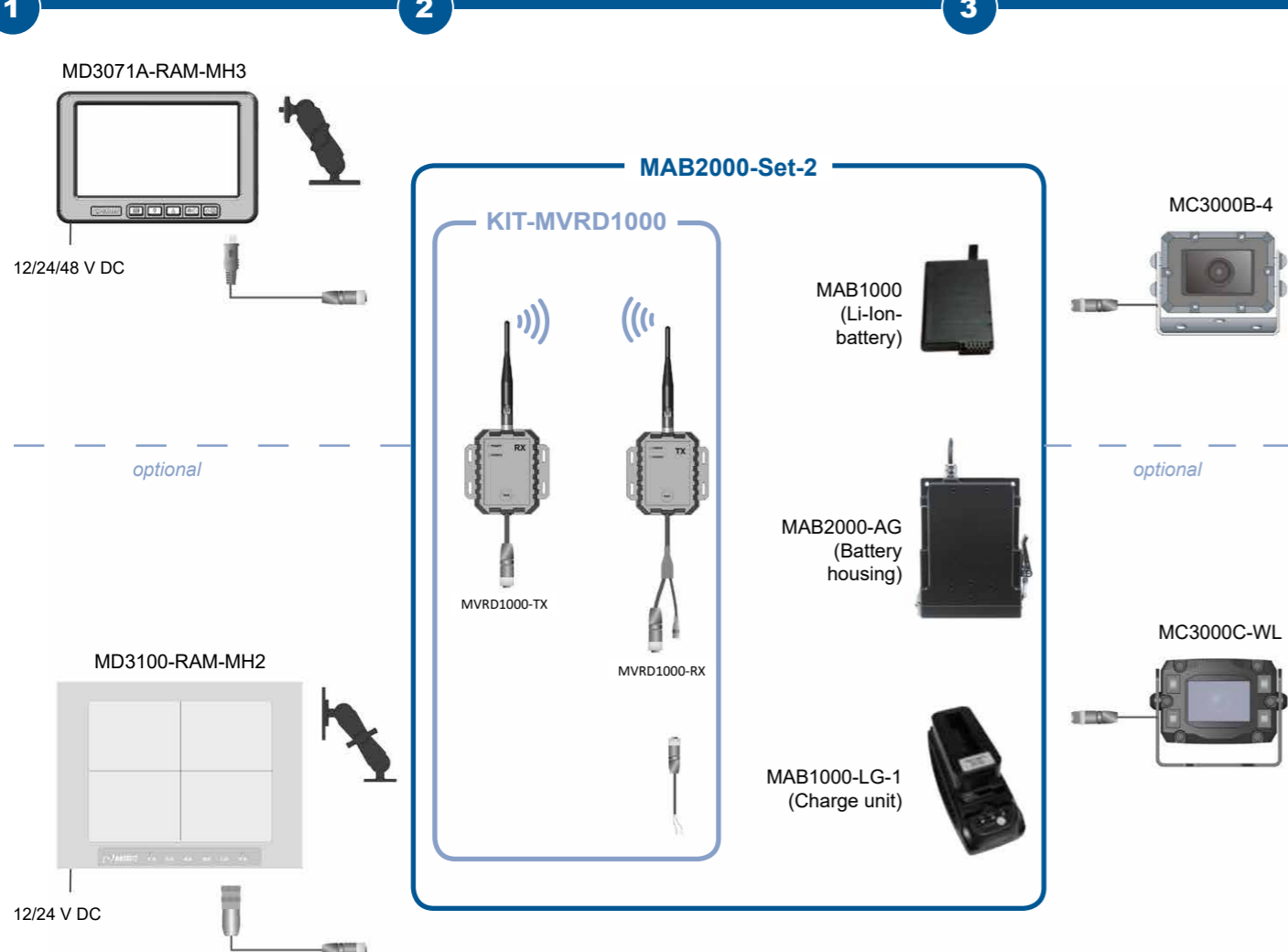
The Motec Workview System is a compact, wireless camera monitor system suitable for any type of crane and crane application. The digital radio system MAB2000-Set-2 is the basic module. The modular system design allows the addition of further components such as monitors, cameras, pendulum units and VCR. This allows the system to be individually adapted to special requirements.

ADVANTAGES:

- Applicable for all crane types
- Modular concept
- Operating time up to 28 hours on one battery
- Interference resistant digital wireless system with low latency (180m/s)
- Up to 10 systems simultaneously
- Simple and flexible installation with heavy-duty magnets and brackets
- Shock and vibration resistant



1 Heavy-duty monitor **2 MAB2000-Set-2 Digital wireless system** **3 Heavy-duty camera**



1 MD3071A 7" Heavy-duty monitor

- 7" monitor (17.8 cm screen size)
- PAL/NTSC video system
- Connection of up to 2 cameras and an additional external video controller (for up to 4 additional cameras)
- Voltage supply 9...60 V DC
- Protection class IP30



optional

2 MAB2000-Set-2 Digital wireless system

- KIT-MVRD1000**
- MVRD1000-RX video receiver
 - MVRD1000-TX video transmitter
 - Large range (up to 120 m)
 - Protection class IP69K



MAB2000-AG Battery housing

- Robust aluminum housing
- Simple and flexible installation
- Automatic switch on and off by integrated acceleration sensor
- Protection class IP68/69K



MAB1000-LG-1 Charge unit

- Charging time 3 to 5 hours
- Charging temperature 0 to 40 °C



MAB1000 Re-chargeable battery

- Operating time up to 28 hours
- Resistant to temperatures up to -20 °C
- Li-Ion battery
- Weight 0,4 kg



3 MC3000B Heavy-duty camera

- Milled aluminium housing
- Automatically controlled camera heating
- Automatic brightness compensation
- Automotive CMOS sensor
- Withstands continuous exposure to frost down to -60 °C
- Salt spray resistant
- Shock and vibration resistant
- Resistant to immersion in water and high-pressure cleaning (IP68/69K)
- 20°, 40°, 70°, 90°, 100° and 115° horizontal image angle



optional

3 MC3000C-WL Heavy-duty camera

- White light illumination with a beam angle of 120°
- Robust aluminium housing
- Special window heater
- Automotive CMOS sensor
- Salt spray resistant
- Shock and vibration resistant
- Resistant to immersion in water and high-pressure cleaning (IP68/69K)
- 40°, 70°, 90°, 100° und 115° horizontal image angle

