

# Measuring block, type 0230

For measuring shear forces

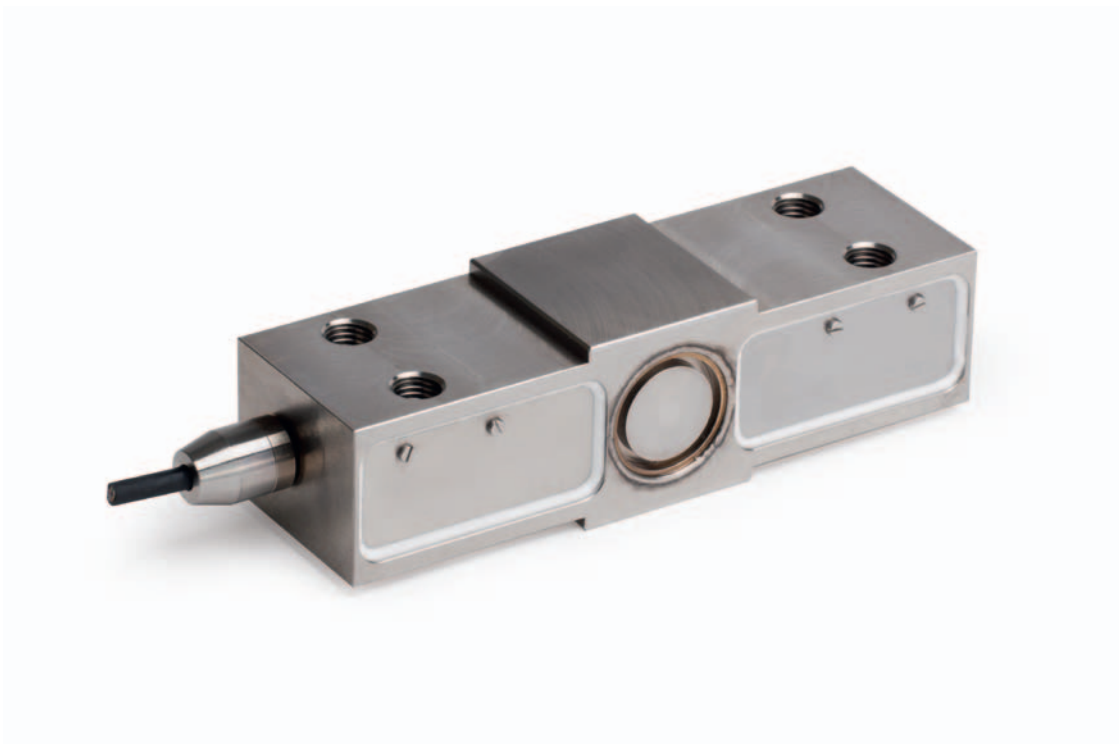
BROSA measuring blocks measure horizontal shear and bearing forces without considering the vertical loads. Thanks to their integrated ridges the extremely robust measuring blocks can be installed so that they are slip-proof. The proven and tested strain-gauge technology and fully developed amplifiers allow for reliable and exact measurement results, BROSA measuring blocks can be permanently used under the most extreme environmental conditions.

## Applications

- Production lines
- Screen tension measurement
- Machine construction

## Features

- Customer-specific design
- Integrated amplifier
- High overload capacity
- Designed for endurance strength
- Temperature compensated
- High EMC resistance



# Measuring block, type 0230

## Technical data

Accuracy	≤ 1.0 % FS
Measurement range	10 kN to 100 kN
Maximum load	≥ 150 %, optional 300 %
Breaking load	≥ 300 %, optional 500 %
Linearity error	≤ 1.0 % FS
Hysteresis	≤ 1.0 % FS
Reproducibility	≤ 0.1 % FS
Temperature range	-40 to +80 °C
Temperature coefficient	≤ 0.0035 % / K
Supply voltage	9 to 36 VDC
Output signal	4 to 20 mA, optional redundant CANopen, optional safety PROFINET, optional PROFIsafe
Protection class	IP 67, optional IP 69K, according to DIN EN 60529
Interference immunity	Up to 200 V/m HF, 100 mA BCI according to ISO 11452, DIN EN 61000-4, ISO 7637
Emission	DIN EN 55025
Climate tests	DIN EN 60068-2
Vibration resistance	DIN EN 60068-2
Electrical connections	M12x1, 4-pins
Electrical protection classes	Reverse polarity protection, overvoltage protection and short-circuit protection
Material	Stainless steel

## Options

Safety classification acc. to DIN EN ISO 13849-1	PL c, PL d (PL e)
Explosion protection	ATEX Ex i
Passive design	Output ~ 1 mV / V



ISO 9001:2008  
ISO 14001:2004



94/9/EG